

Platinum 90188 ezEX-RJ45 Starter Kit



Platinum 90188 ezEX-RJ45 Starter Kit

We're making it easy to step up to the most advanced RJ45 connector we've ever made. The nEXt Revolution in RJ45 Connector Design.

The ezEX Starter Kit gives you everything you need to start using Platinum's most advanced connector – the ezEX RJ45®. The kit includes the EX0™ Crimp Frame with EX Die for perfect crimps and clean trims every time, as well as a complete assortment of ezEX connectors and strain reliefs, all at a very special price. The ezEX is the most modern RJ45 connector design that will handle the widest variety of cable sizes while offering Cat5e, Cat6 and Cat6A compatibility at speeds up to 10Gb. It is also the only one-piece connector we make that is certified for use in PoE and PoE applications.

\$205.00 Value

- Kit Contains:
- EX0™ Crimp Frame with EX Die

- 25pcs. ezEX38 Connector Cat5e
- 50pcs. ezEX44 Connector Cat6
- 25pcs. ezEX48 Connector Cat6A
- 20pcs.ezEX Strain Relief in asst. colors

Cat5e, Cat6 and Cat6A compliant

3 sizes to fit most cables

10Gb speed tested

The unique design of the EX0 Crimp Fram together with the patented external load bar of the ezEX-RJ45 connector produces a flush trim every time-so flush they are certified for use in PoE and PoE systems.

AVAILABLE FOR A LIMITED TIME

Platinum Tools 15316 Maxim 16 Wire Stripper 10-5 AWG



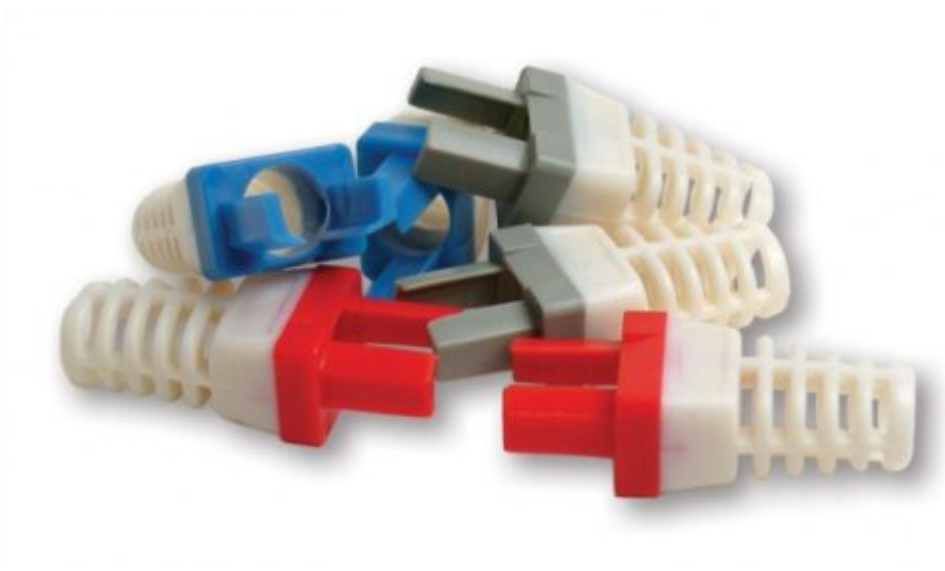
Platinum Tools 15316 Maxim 16 Wire Stripper 10-5 AWG

Heavy duty wire stripping and cutting tool. Ergonomic handle is designed for comfort and reduces fatigue. The autoform laminated stripping jaws form around the radius of the cable to ensure no damage to the inner conductor.

- 10-5 AWG stripping range.
- For use with round, oval and flat wire cable.
- Built in wire stop for measuring strip length.

- High leverage built-in cutter with safety guard.
 - Made from high grade polymers and carbon steels to ensure long life and reliable performance.
 - Manufactured in the UK.
-

Platinum Tools 100030B-C Strain Reliefs for EZ-RJ45 CAT6 Connector Blue 50/pk



Platinum Tools 100030B-C Strain Reliefs for EZ-RJ45 CAT6 Connector Blue 50/pk

50/pk

This strain relief is designed specifically for the EZ-RJ45® CAT6 Connector. The unique design allows the strain relief to be crimped with the connector, making it an integral part of the complete assembly. Once terminated, the strain relief will not pull off the connector. Electrical performance of the termination is optimized by maintaining the bend radius of the cable exiting the rear of the connector, per Category 6 requirements. Professional high quality appearance. Achieve the look of a commercially molded patch cord with a field termination!

- Strain reliefs are required for Category 6 compliance!
- Designed to be used with the EZ-RJ45® CAT6 Connector.
- NOT intended to be compatible with other brands >

APPLICATION

Can also be used with RJ45, standard modular plugs, both CAT5e and CAT6 in most applications.

- Max allowable cable OD 0.235

Platinum Tools TVFL100 Fiber Optic Visual Fault Locator



Platinum Tools TVFL100 Fiber Optic Visual Fault Locator

Works with virtually all common fiber optic sizes and connector types, allowing you to test cables prior to install and test patch & breakout cables for faults. Powerful 10mW laser makes faults easy to see. Convenient flip-cap

protects the laser tip, and with included adaptor works with most common sizes and types of fiber connectors.

- Bright 10mW laser for continuity testing, also shows breaks and performance-reducing bends in most types of fiber optic cable
- Aluminum construction for lightweight and durability
- Simple slide switch to select either a flashing or solid beam
- Hinged flip cap protects the lens when not in use
- Works with both 1.25 & 2.5mm ferrules
- Runs for more than 20 hours on 2 AA batteries (included).

Platinum Tools BNC-Type Nickel SealSmart Coaxial Compression Connectors RG 59 Red



Platinum Tools BNC-Type Nickel SealSmart Coaxial Compression Connectors RG 59 Red

18041 25/bulk

28041J 40/Jar

18042 6/pk

Platinum Tools' SealSmart Compression Connectors provide simple, fast and reliable terminations. The perfect solution for CATV, DSS, Security, Home Theater and Residential Structured wiring installations.

- Molded in gasket provides a weather tight seal at cable entry.
- Single crimp termination with captive center contact design.

- Universal crimp tool terminates all three SealSmart Connector designs.

APPLICATION

Use on RG59 shield cables. Connectors are color coded for cable type.

Platinum Tools PR0-Strike Punchdown Tool



Platinum Tools PR0-Strike Punchdown Tool

13150C PR0-Strike Punchdown Tool, handle only

13155C PR0-Strike Punchdown Tool, w/66 blade

13156C PR0-Strike Punchdown Tool, w/110 blade

13157C PR0-Strike Punchdown Tool, w/66 & 110 blades

13159C PR0-Strike Punchdown Tool, w/66/110 Combo blade

The new PR0-Strike Punchdown Tool combines rugged design, an ergonomic comfort grip handle and enhanced functions. The primary tool for all telecom and

datacom installers working with 110, 66, Krone and BIX™ style cross connects. This professional tool will provide precise, repeatable and reliable terminations that helps ensure installations pass certification and your peace-of-mind.

- Terminate and cut Cat3/5/5e/6 cables
- Spring loaded for fast, low effort wire seating and termination
- Bayonet style (twist & lock) blade retention socket is compatible with industry standard tools and blades
- New built-in hook – feeds or removes wire
- New multi-use spudger – for screwdriver, IDC insert tool or to clean debris
- 110, 66, 630, Krone and BIX™ style interchangeable blades
- Color coded yellow on the cut side of the tool per industry standard
- Adjustable low and high force impact settings are precisely controlled to meet the industry standard 8762D spec
- Will not damage sensitive circuitry
- Spare blade storage compartment in the handle

APPLICATION

- Terminate and trim wires in 66, 110, Krone and BIX™ style cross connect blocks
- Terminate and trim wires in 110 & 630 style wall jack modules

Platinum Tools 13001C 66 Style Blade



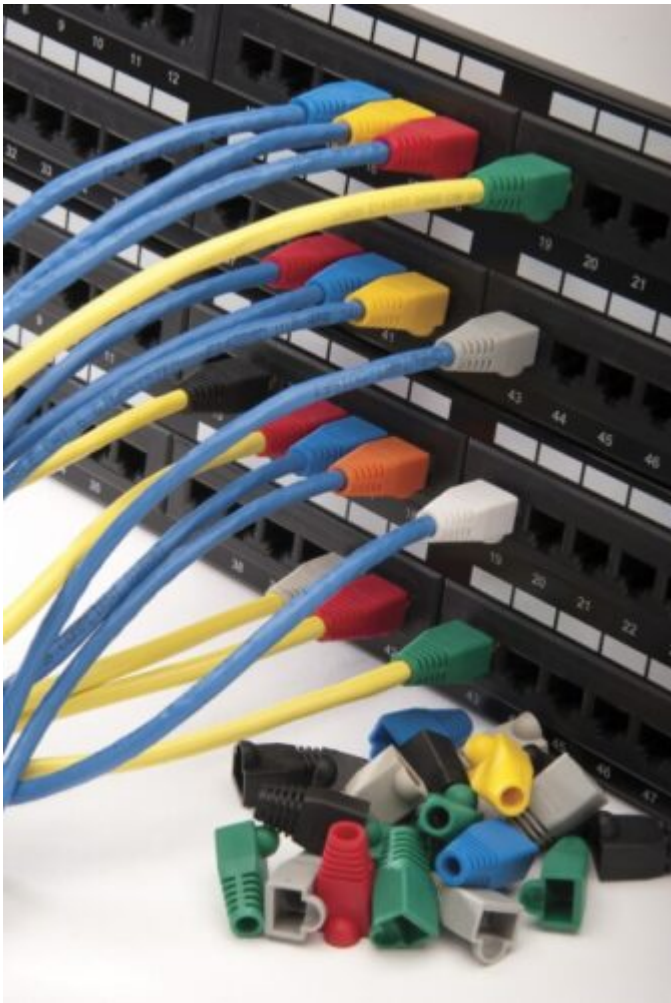
Platinum Tools 13001C 66 Style Blade

66 Style Blade for Punchdown Tools.

- Manufactured from high carbon tool steel.
- Heat treated for durability.

- Compatible with industry standard punchdown tools.

Platinum Tools RJ45 Boots 5.5mm Max OD 100/bag



Platinum Tools RJ45 Boots 5.5mm Max OD 100/bag

105060 100/bag Red

105061 100/bag Blue

105062 100/bag Black

105064 100/bag Green

105065 100/bag Yellow

105066 100/bag White

105067 100/bag Purple

105068 100/bag Orange

Organize your cables and protect RJ45 plugs with snagless Cat5e, Cat6 and Cat6A boots.

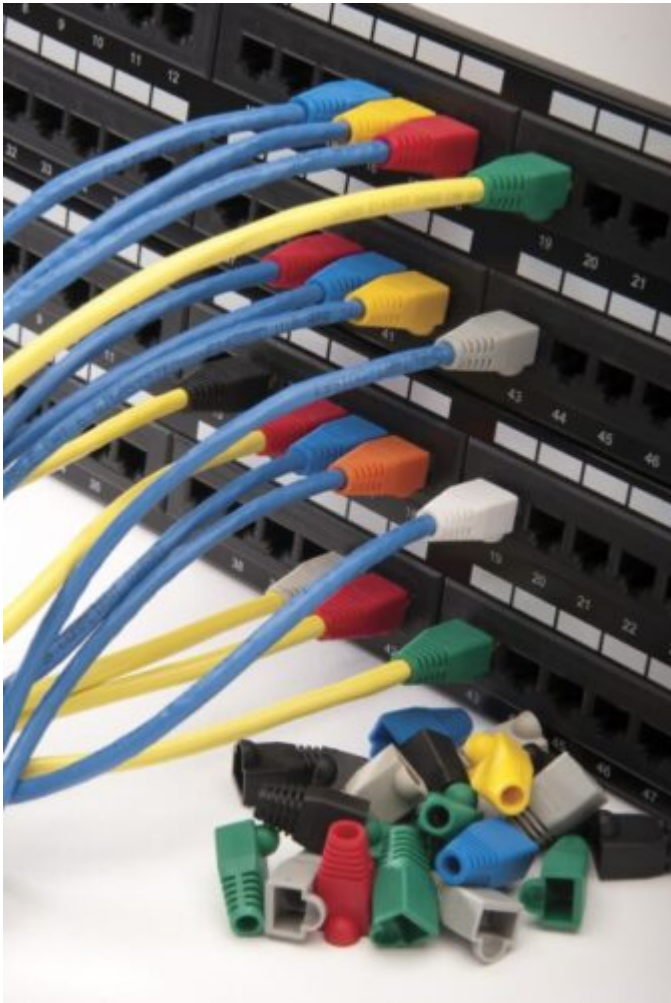
- Protect the connector
- Prevent tangled messes
- Eliminate broken release/locking tabs
- Relieve stress on cable
- Help maintain radius bend
- Color code designated
- Cover the external ground on shielded connectors
- Max Cable OD: From 0.217 to 0.344 inches
- Manufactured from PVC material

APPLICATION

Max Cable OD:

- 5.5mm / 0.217" (typically for Cat5e)
- 6.0mm / 0.236" (typically for small Cat6)
- 6.5mm / 0.260" (typically for medium Cat6)
- 7.0mm / 0.275" (typically for large Cat6)
- 7.5mm / 0.295" (typically for large Cat6)
- 8.0mm / 0.314" (typically for Cat6A)
- 8.5mm / 0.334" (typically for large Cat6A)

**Platinum Tools RJ45 Boots 6.0mm Max OD
100/bag**



Platinum Tools RJ45 Boots 6.0mm Max OD 100/bag

105071 100/bag Red

105072 100/bag Blue

105073 100/bag Black

105074 100/bag Gray

105075 100/bag Green

105077 100/bag White

105078 100/bag Purple

105079 100/bag Orange

Organize your cables and protect RJ45 plugs with snagless Cat5e, Cat6 and Cat6A boots.

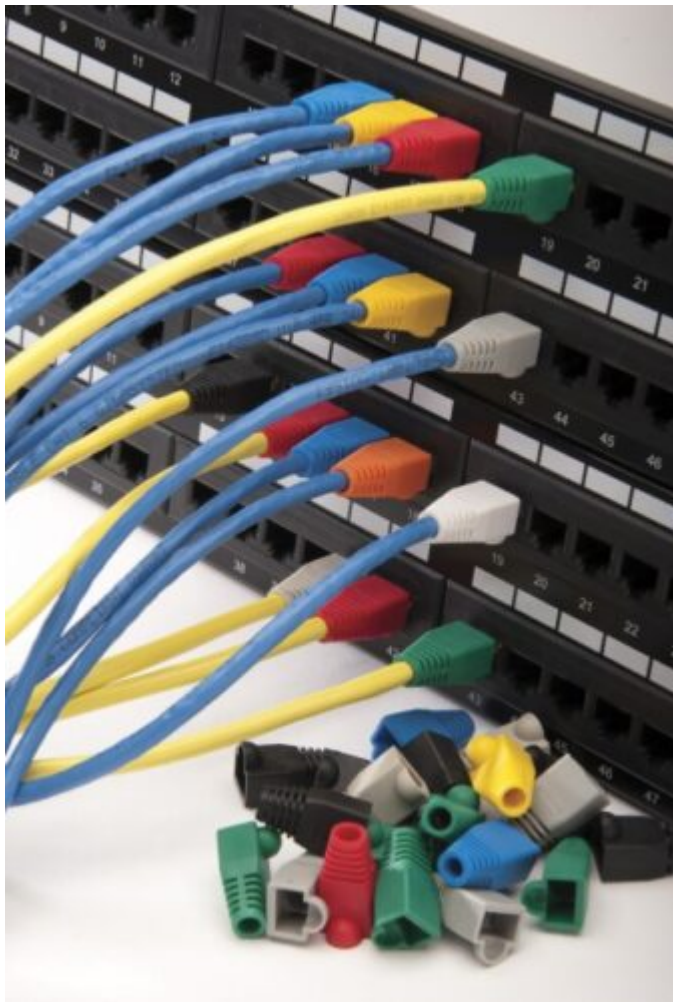
- Protect the connector
- Prevent tangled messes
- Eliminate broken release/locking tabs
- Relieve stress on cable
- Help maintain radius bend
- Color code designated
- Cover the external ground on shielded connectors
- Max Cable OD: From 0.217 to 0.344 inches
- Manufactured from PVC material

APPLICATION

Max Cable OD:

- 5.5mm / 0.217" (typically for Cat5e)
- 6.0mm / 0.236" (typically for small Cat6)
- 6.5mm / 0.260" (typically for medium Cat6)
- 7.0mm / 0.275" (typically for large Cat6)
- 7.5mm / 0.295" (typically for large Cat6)
- 8.0mm / 0.314" (typically for Cat6A)
- 8.5mm / 0.334" (typically for large Cat6A)

**Platinum Tools RJ45 Boots 6.5mm Max OD
100/bag**



Platinum Tools RJ45 Boots 6.5mm Max OD 100/bag

105081 100/bag Red

105082 100/bag Blue

105083 100/bag Black

105084 100/bag Gray

105085 100/bag Green

105086 100/bag Yellow

105087 100/bag White

105088 100/bag Purple

105089 100/bag Orange

Organize your cables and protect RJ45 plugs with snagless Cat5e, Cat6 and Cat6A boots.

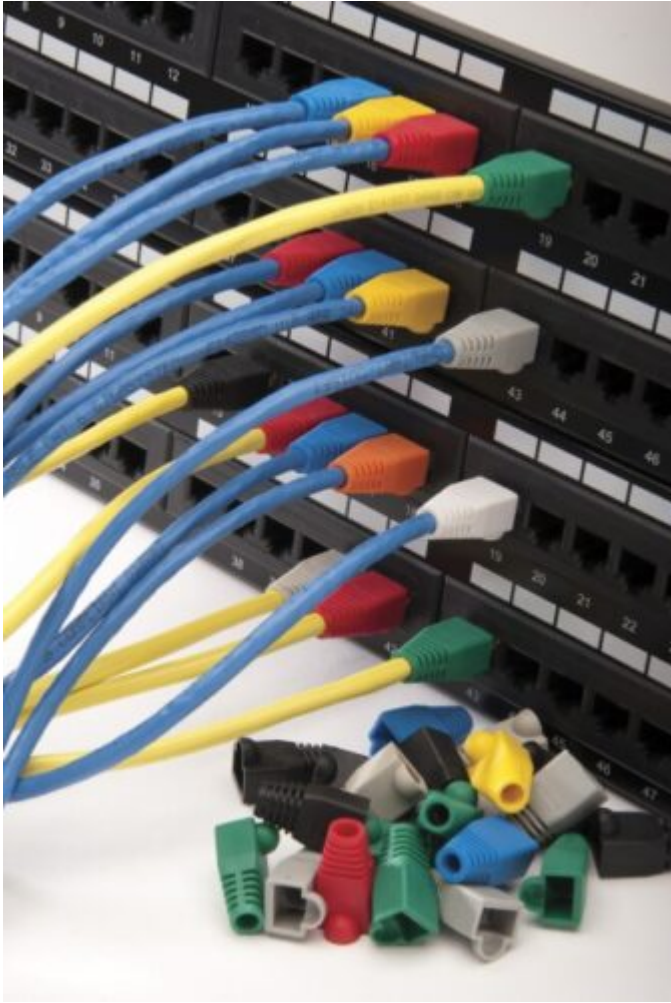
- Protect the connector
- Prevent tangled messes
- Eliminate broken release/locking tabs
- Relieve stress on cable
- Help maintain radius bend
- Color code designated
- Cover the external ground on shielded connectors
- Max Cable OD: From 0.217 to 0.344 inches
- Manufactured from PVC material

APPLICATION

Max Cable OD:

- 5.5mm / 0.217" (typically for Cat5e)
- 6.0mm / 0.236" (typically for small Cat6)
- 6.5mm / 0.260" (typically for medium Cat6)
- 7.0mm / 0.275" (typically for large Cat6)
- 7.5mm / 0.295" (typically for large Cat6)
- 8.0mm / 0.314" (typically for Cat6A)
- 8.5mm / 0.334" (typically for large Cat6A)

Platinum Tools RJ45 Boots 7.0mm Max OD 100/bag



Platinum Tools RJ45 Boots 7.0mm Max OD 100/bag

105091 100/bag Red

105092 100/bag Blue

105093 100/bag Black

105094 100/bag Gray

105095 100/bag Green

105096 100/bag Yellow

105097 100/bag White

Organize your cables and protect RJ45 plugs with snagless Cat5e, Cat6 and Cat6A boots.

- Protect the connector

- Prevent tangled messes
- Eliminate broken release/locking tabs
- Relieve stress on cable
- Help maintain radius bend
- Color code designated
- Cover the external ground on shielded connectors
- Max Cable OD: From 0.217 to 0.344 inches
- Manufactured from PVC material

APPLICATION

Max Cable OD:

- 5.5mm / 0.217" (typically for Cat5e)
- 6.0mm / 0.236" (typically for small Cat6)
- 6.5mm / 0.260" (typically for medium Cat6)
- 7.0mm / 0.275" (typically for large Cat6)
- 7.5mm / 0.295" (typically for large Cat6)
- 8.0mm / 0.314" (typically for Cat6A)
- 8.5mm / 0.334" (typically for large Cat6A)

Platinum Tools EZ-RJ12/11 Connectors Long Tab



Platinum Tools EZ-RJ12/11 Connectors Long Tab

100026LTC 50/pk

100026LTB 100/box

105005LT 500/bulk

The EZ-RJ12/11 Connector simplifies twisted pair terminations by allowing the wires to be inserted through the connector and out the front. This allows the technician to easily verify the proper wiring order prior to termination. Use the EZ-RJPRO HD™ Crimp Tool (P/N 100054) or EXO Crimp Frame® with EZ-12/11 Die (100061 & 100073C) for single cycle crimping and trimming of the excess wire. FCC compliant and UL rated. Made in the USA.

- For use in telephone & security installations.
- Faster, easier terminations with reduced scrap.
- For specialized telephone installations & communications equipment.
- For applications requiring custom/specific wire configurations.
- Works on solid or stranded wire.
- Designed for 6, 4, and 2 conductor applications.

Platinum Tools WW-722 WarriorWrap 722 Select 7 mil Electrical Tape



Platinum Tools WW-722 WarriorWrap 722 Select 7 mil Electrical Tape

We designed WarriorWrap Specialty Tape to meet your exacting requirements and the demanding environments of electrical construction, so you can be confident every residential or commercial application can be wrapped up right. Made of 7mil thick PVC with a rubber-based adhesive, WarriorWrap 722 Select tape is rated as primary insulation for circuits of up to 600 volts.

- Excellent adhesion and elasticity
 - All weather performance
 - High tensile strength
 - Resistant to UV, abrasion and corrosion
 - Flame-retardant
 - UL Listed and CSA Certified
 - Available in 11 standard industry colors
-

Platinum Tools JH950-100 Threaded Rod – 1/4-20 Male Coupler



Platinum Tools JH950-100 Threaded Rod – 1/4-20 Male Coupler

Hang ceiling wire & jack chain, threaded rod and eye lag screws. Our hardware is designed for the most efficient, secure and cost effective solution.

- High quality all steel construction
- Threaded and non-threaded holes to accommodate jack chain, ceiling wire or threaded rod

APPLICATION

- Vertical Overhangs
 - Hammer-on
 - Threaded Rod
 - Powder Actuated
 - Eye Lag Screws
 - Threaded Rod
 - Pressed Beam Clamps
-

Platinum Tools RCA-Type Nickel SealSmart Coaxial Compression Connectors RG 6 Black



Platinum Tools RCA-Type Nickel SealSmart Coaxial Compression Connectors RG 6 Black

18051 25/bulk

18051C 6/pk

28051J 50/jar

Platinum Tools' SealSmart Compression Connectors provide simple, fast and reliable terminations. The perfect solution for CATV, DSS, Security, Home Theater and Residential Structured wiring installations.

- Molded in gasket provides a weather tight seal at cable entry.
- Single crimp termination with captive center contact design.
- Universal crimp tool terminates all three SealSmart Connector designs.

APPLICATION

Use on RG6 shield cables. Connectors are color coded for cable type.

Platinum Tools 2039 Copper Foil Strips 100/bag



Platinum Tools 2039 Copper Foil Strips 100/bag

100/bag

Platinum Tools Copper Foil Strips consist of a copper foil backing and conductive adhesive. The Copper Foil Strips are supplied on removable paper sheet for easy handling. Copper foil strips are typically used as an EMI / RFI shielding for applications in the electronics industry such as static charge draining, seaming shielded rooms, cable wrapping, and surface contact to non-solderable materials. These copper foil strips work perfectly with all the Platinum Tools Shielded RJ45 Connector and Shielded Keystone Jacks.

- Conductive Adhesive
- EMI/RFI Shielding Strips
- Improves Bandwidth Performance
- 10 strips per sheet (10 sheets per pack) 100 pcs

Platinum Tools ezEX44 Shielded External Ground CAT6 Connector



Platinum Tools ezEX44 Shielded External Ground CAT6 Connector

100025C 25/pk

202051J 50/Jar

105028 100/Bag

This shielded, patented ezEX-RJ45 connector is designed for larger cables and conductors. Features a unique integrated Hi-Lo stagger load bar and allows 'big' conductors to pass through the front end of the connector making it easy to verify the wiring sequence before terminating. This connector is typically used with CAT6 and is terminated with EX0 Crimp Frame® and EX0-EX Die™ (100061C).

- Hi-Lo stagger to isolate each conductor
- Simple one piece/pass through design, no bars or liners
- Shielded 5e/6/6A compliant
- Insulation Diameter (Conductor) – Size range: 0.039" – 0.044" (1.0 –1.12mm)

- Max Outer Diameter: 0.305" (7.75mm)
 - 50 micron gold plated contacts
 - Solid or Stranded 24-22 AWG
 - TAA, TIA, RoHS, UL & FCC compliant
 - Made in the USA
 - US Patents 9,543,729 B2; 10,116,082 B2; & 10,573,990 B2. Foreign patents.
-

Platinum Tools ezEX44 Shielded CAT6 Connector Internal Ground



Platinum Tools ezEX44 Shielded CAT6 Connector Internal Ground

100024C 25/pk

202050J 50/jar

105027 100/bag

This shielded, patented ezEX-RJ45 connector is designed for larger cables and conductors. Features a unique integrated Hi-Lo stagger load bar and allows

'big' conductors to pass through the front end of the connector making it easy to verify the wiring sequence before terminating. This connector is typically used with CAT6 and is terminated with EX0 Crimp Frame® and EX0-EX Die™ (100061C).

- Hi-Lo stagger to isolate each conductor
- Simple one piece/pass through design, no bars or liners
- Shielded 5e/6/6A compliant
- Insulation Diameter (Conductor) – Size range: 0.039" – 0.044" (1.0 –1.12mm)
- Max Outer Diameter: 0.280" (7.1mm)
- 50 micron gold plated contacts
- Solid or Stranded 24-22 AWG
- TAA, TIA, RoHS, UL & FCC compliant
- Made in the USA
- US Patents 9,543,729 B2; 10,116,082 B2; & 10,573,990 B2. Foreign patents.